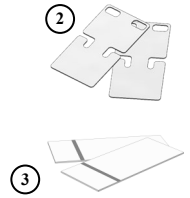


### Content

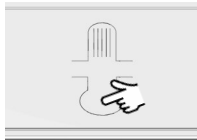
- ① 1x Electronic Paper Display
- ② 1 x Fastener Kit containing:
  - ② Metal clips (x2)
  - ③ Tesa Powerstrips® (x2)



**SCAN QR-CODE FOR HOW-TO-SET PRICING & NIGHT SLEEP VIDEO**

<https://www.motiondisplay.com/labatt-price-2024/>

### Display Control Buttons



**Animation On/Off**  
⌂ ≥2 seconds



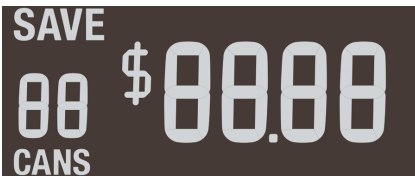
**Enter/Exit Setting Mode\***  
⏏ ≥2 seconds



**Set Values (Setting Mode)**  
⏏ Change position  
⌂ Change value \*\*

**Note!** Long press on both buttons simultaneously for **Night Sleep Setting**.

### Setting Mode Overview



**Position - Change position with button** ⏏  
① ② ③ ④ ⑤ ⑥

**Toggle between CANS and SAVE with button** ⌂

Setting Mode is indicated by a black background.  
Currently selected position is flashing.

Each digit can be set to 0-9 and blank. If value is set to blank (don't show), a short flash indicates current position.

Leading digits set to zero (positions 1 and 3), will be shown as blank.).

If SAVE value is set to 0 it will not be shown.  
If multi figure value is set to 0 it will not be shown.

\* 20s idle will exit Setting Mode    \*\* Changed values take effect immediately

**Note!** The display is delivered with the SAVE value set to 0, i.e unless changed it will not be seen.

### Night Sleep Activation

The battery life length can be extended by activating the Night Sleep mode, and the display will sleep for 8 hours per day. During Night Sleep, the animation stops and shows the current price together with a small moon symbol.

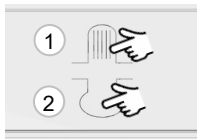


**Note!**

Long press on both buttons simultaneously moves into **Night Sleep Setting**, first time with **12** blinking, indicating that Night Sleep (NS) has now been activated and that 12 hours remain until the display will go to sleep.



To change the number of hours before the display goes to sleep, push until the requested numbers of hours before going to sleep (1-15) is shown.



In order to **turn OFF NS**, push to make only **h** blinking, then push , and the OFF screen is shown, indicating that NS has been turned off.



Pushing repeatedly toggles between "OFF" and "h xx".

Holding down for a long time exits NS setting—or just wait for "time-out".

### Night Sleep Hour "Check" and/or "Change".

Move into NS Setting with a long press on both buttons simultaneously.

Display now tells how many hours left until NS. Example: If initial setting was "h 12" and two hours have past, the display will now show "h 10").

By changing value (1-15) with , the new selection will be activated.

Holding down for a long time exits NS setting - or just wait for "time-out".

Note! If Display is in NS mode, activates the display for one animation sequence, enough time to activate NS setting and chose a new time or turn "OFF" NS.

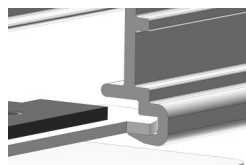
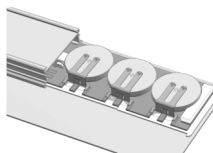
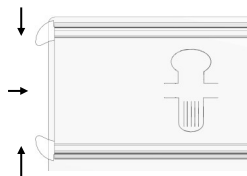
### Replacing the Batteries

When it is time to replace the batteries, a battery symbol is shown and the display stops animating, showing the current price, the so called End of Life view.



Squeeze the "snap locks" and slide the extrusion off the display to expose the batteries. Remove and replace the batteries, the "+" sign facing up. Slide the display back according to image until locked in position.

*Do not mix old batteries with new ones. Only use CR2450 batteries!*



**LEGAL DISCLAIMER:**

MOTION DISPLAY SCANDINAVIA AB AND ALL ITS AFFILIATES DISCLAIM ANY AND ALL RESPONSIBILITY FOR USE OF MOTION DISPLAY PRODUCTS FOR OTHER PURPOSES THAN ITS INTENDED USE AS DESCRIBED IN THIS USER INSTRUCTION. INSTALLATION AND REMOVAL MAY ONLY BE PERFORMED BY AUTHORIZED PERSONNEL, AND SHALL BE MADE ONLY IN ACCORDANCE WITH THIS INSTRUCTION. MOTION DISPLAY DISCLAIM ALL RESPONSIBILITY FOR ANY INJURIES CAUSED BY WRONGFUL HANDLING OF THE PRODUCT, INCLUDING FROM ANY MATERIAL LEFT ON SHELF AFTER REMOVAL.